

**SCALE PREVENTION
CORROSION PREVENTION
BIOFOULING CONTROL**

FILTERSORB
FILTRATION
ADSORPTION
INSTANT PRODUCTS
OXY TREATMENT
SYSTEMS

FilterSorB SCB

WATER TREATMENT

INTRODUCTION

FilterSorB SCB is a revolutionary water treatment media designed by **Watch Water**® Mannheim. It is an exclusive, ready-to-use formulation that integrates the best of **Watch Water**®'s proprietary technologies to effectively tackle **Scale buildup, Corrosion, and Biofouling** in residential, commercial, and industrial water systems.

FORMULATION

75 % Filtersorb-SP3

Advanced Nucleation Assisted Crystallization (NAC) media to prevent scale by forming stable aragonite crystals.

12.5 % CorrTrapp

An innovative corrosion prevention technology developed by **Watch Water**®. Magnesium-based technology like **CorrTrapp** is indeed revolutionary, offering a dual benefit: **Corrosion protection** for pipes and equipment, and added health benefits for every water consumer.

12.5% HydroSorb

A high-performance media combining **Metal Organic Frameworks (MOFs)** and **Covalent Organic Frameworks (COFs)** to combat biofilm and microbial contamination. **HydroSorb** is a innovative water treatment product developed by **Watch Water**®. It is designed to effectively capture, retain, and purify water, addressing challenges related to water scarcity, pollution, and resource management.

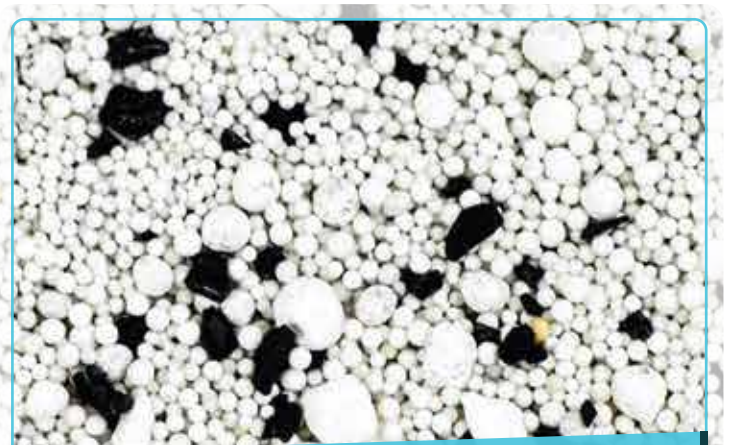
FilterSorB SCB

The Advanced Solution For

Scale

Corrosion and

Biofilm Prevention

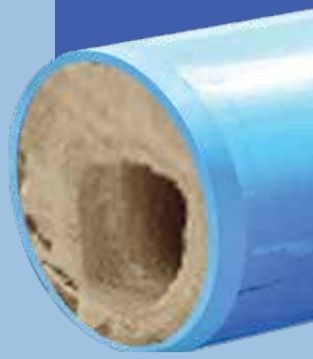


**LEVERAGING ADVANCED
FILTERSORB SCB TECHNOLOGY**

FILTERSORB

- FILTRATION
- ADSORPTION
- INSTANT PRODUCTS
- OXY TREATMENT
- SYSTEMS

BLOCKED PIPE



CLEAN PIPE WITH FILTERSORB SCB



FEATURES AND BENEFITS

Filtersorb SP3 : Scale Prevention stop scale formation and removes existing scale deposits.

CorrTrapp : Corrosion Resistance extends the life of pipelines and equipment by preventing corrosion water pipe corrosion threatens your entire plumbing system, and **Corrosive Water** is very dangerous for your health.

Drinking water from corroded pipes can cause various health problems, including **liver** and **kidney** damage. Cooking with it will only heat up the contaminants and chemicals, making the water even more unhealthy for consumption. As such, **Corrosion** can render your entire water system unusable.

Water softeners may remove mineral ions, but they do not remove contaminants such as Bacteria, Heavy metals like lead, mercury, microplastics, PFOA, PFAS, and Radionuclides. Hydrosorb does that all.

HydroSorb: Biofilm Control Destroy harmful bacteria, protozoa, and biofilms ensuring safe and clean water. It adsorb a wide variety of contaminants from water. It effectively removes organic pollutants such as pesticides and pharmaceuticals, inorganic contaminants like flourides and Arsenic, heavy metals including lead and mercury, radioactive substances, and emerging contaminants like microplastics and PFAS.



Environmentally Friendly

Requires no backwash, electricity, or regeneration chemicals, making it eco-friendly and very-very cost-effective.



Adaptable Applications

Suitable for **City Water, Well water, Hot water** and Reverse Osmosis feedwater, cooling water and all sorts of Heat Exchangers.

TECHNICAL SPECIFICATIONS

| | |
|----------------------|--|
| System Type | Designed for up-flow operation without backwash. |
| Pressure Vessel Size | Must be 4x the volume of FilterSorb SCB media used. |
| Flow Rate | Customizable based on water demand and application. |
| Longevity | A lifespan of 3-5 years, depending on water quality. |

APPLICATIONS

Filtersorb SCB is ideal for:

- Residential Point-of-Use (POU) and Point-of-Entry (POE) systems, both for cold and hot water systems.
- Commercial Water system's like Hotels, Colleges, Universities, Big Building, Multistory housings.
- Industrial and Municipal water system for Scale, Corrosion, and Biofilm prevention.
- Heating Water for Cooling Water Applications.
- Feed Water for Ultrafiltration and Reverse Osmosis Systems.

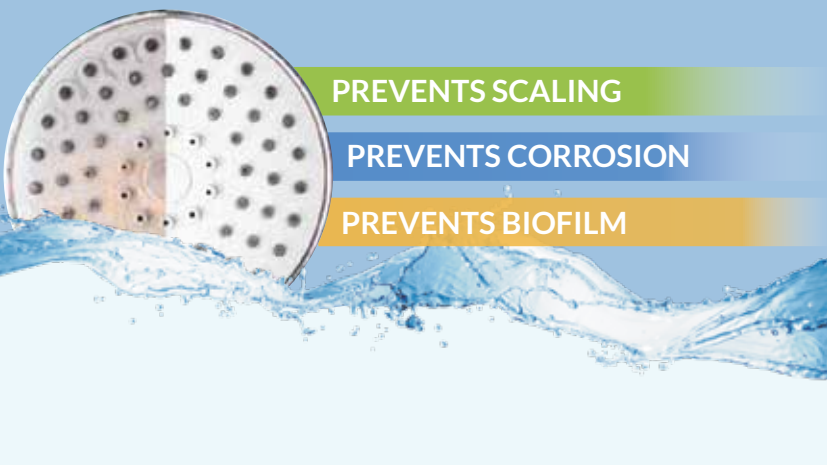
INSTALLATION GUIDELINES

- 1) Calculate the required media volume (e.g. 4 liters for 1000 l/h (4.4 gal/min) of treated water)
- 2) Select a pressure vessel (4 x the media volume)

Note: All small **Filtersorb SCB** systems can be designed with Watch Water Exclusive **Quick Change Upflow**

Quick Exchange Adapter





PREVENTS SCALING

PREVENTS CORROSION

PREVENTS BIOFILM

FILTERSORB

FILTRATION

ADSORPTION

INSTANT PRODUCTS

OXY TREATMENT

SYSTEMS

TANK

| Tanks | Pressure Vessels | Filtersorb SCB (liter) | Flowrate |
|-------|----------------------|------------------------|-------------------------|
| C817 | 2 ½ inch Top Opening | 2 | 500 l/h (2.2 gal/min) |
| C830 | 2 ½ inch Top Opening | 4 | 1000 l/h (4.4 gal/min) |
| C835 | 2 ½ inch Top Opening | 6 | 1500 l/h (6.6 gal/min) |
| C844 | 2 ½ inch Top Opening | 8 | 2000 l/h (8.8 gal/min) |
| C1035 | 2 ½ inch Top Opening | 10 | 2500 l/h (11.0 gal/min) |
| C1252 | 2 ½ inch Top Opening | 12 | 3000 l/h (13.2 gal/min) |

SYSTEM SETUP

3) Install **Filtersorb SCB** in a UpFlow configuration for optimal performance.

MAINTENANCE

4) **Filtersorb SCB** requires no backwash or regeneration, making it a hassle-free solution.

ADVANTAGES OVER CONVENTIONAL SYSTEM

| Feature | Filtersorb SCB | Water Softener |
|----------------------|-------------------|----------------------------|
| Scale Prevention | 100% Effective | High Sodium |
| Corrosion Resistance | High | None |
| Biofilm Control | Excellent | None |
| Salt (NaCl Needed) | None | Regular NaCl Needed |
| Maintenance | None | Regular Maintenance Needed |
| Environmental Impact | Very Eco-Friendly | High wastewater Generation |
| Operating Cost | None | High |

WE HAVE REALLY LAID OUT THE FUTURE FOR THE WATER TREATMENT

WHY CHOOSE FILTERSORB SCB?

Filtersorb SCB is an advanced reliable, and eco-friendly solution, developed by **Watch Water® GmbH** and exclusively manufactured by **Watch Water® GmbH**. Its proprietary formulation guarantees superior performance and longevity in water treatment applications, making it the best choice for both residential and commercial use.



- FILTERSORB**
- FILTRATION**
- ADSORPTION**
- INSTANT PRODUCTS**
- OXY TREATMENT**
- SYSTEMS**



KEY TECHNICAL SPECIFICATIONS

| Parameter | Specification |
|-------------------------------|---|
| Product Name | Filtersorb SCB |
| Formulation | 75% Filtersorb-SP3 12.5% CorrTrapp 12.5 HydroSorb |
| Applications | Scale, Corrosion and Biofilm-Prevention |
| System Type | Upflow System |
| Pressure Vessel Size | Media Volume x 4 |
| Minimum Operating Temperature | 5°C (41°F) |
| Maximum Operating Temperature | 80°C (176°F) |
| Operating pH Range | 6.0-9.5 |

**SAY GOODBYE TO HARD WATER
AND EXPERIENCE THE FILTERSORB SCB
DIFFERENCE TODAY.**



Disclaimer: The information in this publication is based on reliable data and is provided in good faith, without warranty or performance guarantee, as product use conditions are beyond our control. Watch Water GmbH, Germany, does not offer express or implied warranties, including merchantability or fitness for a specific purpose. Users should assess product suitability and performance with their equipment. Specifications may change without notice. Please note that the filter media in this brochure do not eliminate bacteria. Do not use our products with microbiologically unsafe or unknown-quality water without proper disinfection. Watch Water GmbH, Germany, is not liable for consequential or incidental damages, such as lost profits from product use.



Standard Packaging

| Packging | Weight of product | Quantity/ pallet | Gross Wt./ pallet |
|-------------|-------------------|------------------|-------------------|
| Drum (60 L) | 49 kg | 18 | 965 kg |

★ Other packaging can be considered on request

